

KYLA

FEBRUARY 2025

Visit our website <https://www.kylaartistgroup.com>, or contact us at kylaartists@gmail.com



49th ANNUAL WINTER FESTIVAL ART SHOW and SALE

Kyla Landscape Award



ULRIKE GRANER: "Sublime Evening",
soft pastel on paper.

For many years, Kyla Artists Group has sponsored the **Kyla Landscape Award** at the PA Winter Festival Art Show and Sale. At this year's WFASS, this award was won by **Ulrike Graner** for her pastel painting "Sublime Evening".

*****Some comments from Ulrike:**

I got inspired for this piece one day in October, seeing those spectacular clouds. The cattle added interesting shapes to the scene and added to the feeling of peace. The quiet spectacle of the light of the setting sun reflected on the clouds took my breath away.

This started with a charcoal sketch on light orange Pastelmat paper. I kept the landscape quiet, with the cow shapes adding interest and depth. The greens are quiet and muted, not to take attention away from the sky while still making the oranges pop. In the sky, I worked with complementary colours, which helped with setting the oranges off as well.



Left to right: **Kathie Bird**, (Kyla Chair); **Ulrike Graner** (Kyla Landscape Award winner); **Monique Martin**, (Guest curator)

Kyla Artist Group was well represented at the 49th Annual Winter Festival Art Show and Sale. Following are some of our members' pieces included this year.



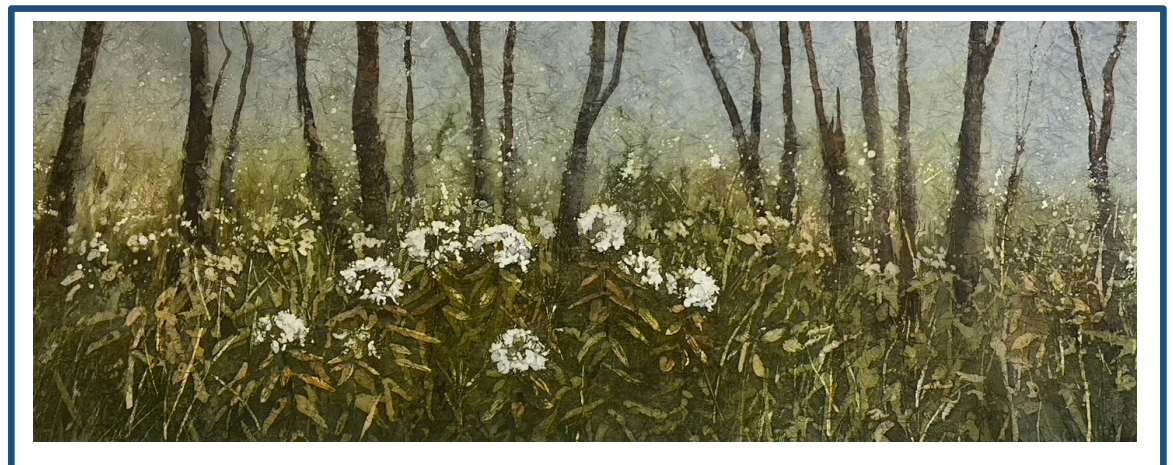
MARCEL ST. AMAND: "The Angler's Dream".

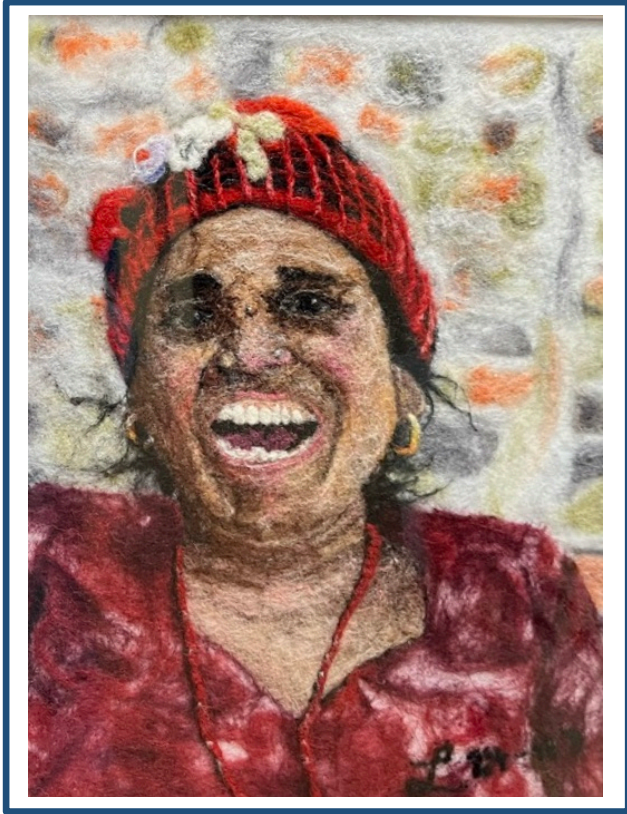
Kyla member Marcel St. Amand was in the prizes this year, winning the **Frank Sudol Memorial Award**, sponsored by the Prince Albert Woodturners. See the photos for the intricate detail in his winning piece, **"The Angler's Dream"**. The pictures don't do it justice- check it out in person!



KATHIE BIRD: "Frosty Morning", mixed media.

CARON DUBNICK: "Tea As Far As You Can See", Watercolour batik on Ginwashi paper, 30" x 15".





LORNA BORYSKI:
“Q’uchukuy (Joy) Of Life”, Felted wool.



KIM MORRALL:
“Survival of the Richest”, mixed media.



ANNETTE HENBID: “Winter at the Pond”, oil.

Mont St. Joseph Gallery Winter Exhibit



As you can see there's lots on display at Mont St. Joseph Care Home. This will remain in place until our *Kyla Spring Show and Sale* replaces it.

You can visit this space **Monday-Friday, from 8am -3 pm**, when the building is open to the public. If you wish to visit outside those hours, please call the **MSJ Office**, to arrange access. **(306-953-4500)**

Should you wish to purchase an artwork, the staff in the office can help you with that.

Our Partners:



Prince Albert

Kyla Annual Spring Show and Sale

Spring is coming and so is our **Kyla 2025 Spring Show and Sale!** Once again, we will be setting up at the Mont St. Joseph Care Home, in partnership with the home and the PA Rotary club. Details are yet to come, but watch for the next newsletter, which will reveal all!



CARON DUBNICK, "Coneflower Chaos",
batik on cotton, quilted.