

KYLA

Spring 2024 Newsletter

Visit our website <https://www.kylaartistgroup.com>, or contact us at kylaartists@gmail.com



KYLA *Annual Fall Show and Sale*



Save the date:

Sept. 28, 2024!

Our next newsletter will reveal more details, but for now here are a few hints as to what we're planning for our **Fall Show and Sale**. As last year, the event will take place at *Mont St. Joseph Special Care Home*, and the format will be roughly the same. The timing will as well, as we are planning for late September. A portion of the proceeds will go to the *Mont St. Joseph Foundation*.

You can expect some good eats and beautiful artwork! Tickets will become available in June. Watch for further details coming soon.

Kyla's New Permanent Exhibition Space!



We are happy to announce that the **Kyla Artist Group** and **Mont St. Joseph Special Care Home** have entered into a very exciting collaboration!

We have hung our initial installment on the feature wall directly opposite the main entrance of the home so that you see it as soon as you enter the building. This gives us a beautiful environment for you to go and view our pieces on an ongoing basis as well as purchase them, right there at the Home.

In appreciation, and so that this will benefit both parties, we are donating a percentage of all sales from this exhibition to the **Mont St. Joseph Foundation**. We hope that you will take the opportunity to discover some of the beautiful pieces on display and help to make this collaboration a wonderfully successful partnership.

You can visit this space **Monday-Friday, from 8am -3 pm**, when the building is open to the public. If you wish to visit outside those hours, please call the **MSJ Office**, at **306-953-4500** to arrange access.

Should you wish to purchase an artwork, the staff in the office can help you with that.

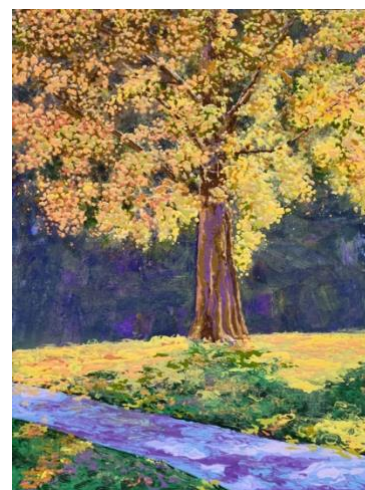
*****Yet to come:** The work of some of the *'artists in residence'* at MSJ will be displayed as well!

For access to our list of art available in this exhibition, click the link below, then click the "Catalogue" button on our homepage. It will take you to a document that will give you details, including price.

<https://www.kylaartistgroup.com>



Do you have some favourite Kyla artists? Or have you become familiar with our artists and their work? Here are a few samples from the exhibition at Mont St. Joseph Home. Perhaps you can identify the artists who did these pieces. The info on each is below just in case.....



Here is more info on the pieces above, starting at the top and L to R:
Kim Morrall, '**Le Grand Coq**', (acrylic); Jaret Mayer, '**Warrior**', (metal sculpture); Annette Henbid, '**November Freeze**', (acrylic); Reanne Settee, '**Perception**', (felted wool); Caron Dubnick, '**Into the Light**', (watercolour); Kathie Bird, '**That Tree**', (acrylic).



These are just a few of our participating artists: Dennis Abernethy, Beryl Fournier, Kim Morrall, Jaret Mayer, Marcel St. Amand, Annette Henbid, Lorna Boryski, and Kathie Bird.